



# OneCare Vermont

## 2023 Budget: Fast Facts

# \$1.5B

### Total accountability for health care in 2023

OneCare's accountability for the cost and quality of Vermont's healthcare is increasing 7.2% (\$97 million) from FY22.



### OneCare is committed to continuing the VT health care system transition to value-based care

OneCare does this by negotiating value-based care contracts for providers; providing actionable data to guide local decision-making; investing in population health to ensure high quality care; and expanding innovative value-based payments that foster better outcomes.

### The 2023 budget strikes a careful balance between advancing health care reform and continued recovery from the COVID-19 pandemic.

### Highlights for 2023 include:

More than double the amount of risk taken from \$16.2M to \$36.5M

Maintained approximately -296,000 total attributed lives

Decreased our operating budget by 1.6% from \$15.4M in 2022 to \$15.2M in 2023

### 2023 budget brings value to Vermont's health care providers

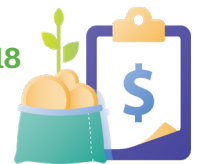


#### Gradually Increasing Provider Accountability

OneCare is taking deliberate and measured steps to increase provider accountability by managing risk and focusing on effective population health management.

#### CPR Participation Has Tripled Since its Inception in 2018

The CPR program has grown from 6 practice sites (3 TINs) in 2018 to 18 practice sites (13 TINs) in 2022.



#### OneCare maintained an administrative budget at half the average cost of national ACOs

Maintaining an admin rate of 1.1% of our total cost of care, lower than the national ACO average of 2% (MedPac, 2018\*), and achieving economies of scale.

#### -\$30M invested directly to health care providers supporting population health initiatives

Investing nearly \$30 million directly to health care providers to support their population health improvements in an ongoing fragile economic environment. These payments promote improved quality and care coordination.



\* MedPac. (2018). Medicare accountable care organization models: Recent performance and long-term issues Retrieved from [https://www.medpac.gov/wp-content/uploads/import\\_data/scrape\\_files/docs/default-source/reportsa/jun18\\_ch8\\_medpacreport\\_sec.pdf](https://www.medpac.gov/wp-content/uploads/import_data/scrape_files/docs/default-source/reportsa/jun18_ch8_medpacreport_sec.pdf)